

A decorative illustration featuring a tiger's head on the left, surrounded by various green leaves, branches, and small black berries. The background is a light cream color with scattered small gold stars and dots.

GO WYLD(.net)

With Databases!

Featuring:

CHILTON LIBRARY



The Wyoming State Library Presents:
THE PB&J WEBINAR SERIES



Date

Thursday,
Sept, 2025



Time

3:30-4:15PM
MST



Paige Bredenkamp
School Library Consultant,
The 'PB' to the PB&J





Joanne Pruitt
Youth Services Consultant,
The 'J' to PB&J



Before we begin...

The screenshot shows a web browser at gowyld.net. The banner features the 'Gowlyld' logo, the text 'Unlock more with your library card' (with 'more' circled in red and 'library card' underlined in red), and 'free online resources' with an arrow pointing to a smartphone. Below the banner, a notice states: 'Beginning July 1, 2025, all University of Wyoming-provided databases will require a public library card to access unless the user is on a Wyoming community college campus or the campus of the University of Wyoming.' A purple arrow points from the right towards this notice.

Icon Legend

	UW funded resources
<hr/>	
	WSL funded resource

Before we begin...

AUTHENTICATION PROCESS

Gowald

Unlock more
with your
library card

free online
resources



Wyoming Library Resources - User Login

To use this resource, you must have a Wyoming library card and your PIN.

Enter your library card number :

*no letters or spaces**

e.g. 29092005555555

PIN :



Authenticate

[forgot your PIN?](#)

Problems logging in? [click here](#) or contact your local public library

*If your library card number starts with a letter, such as 'T' or 'L', enter the entire barcode including the beginning letter.

A FANCY NAME FOR 'LOGIN'

Good News!

 Chilton Library 

WSL



Authoritative automotive repair information. Thousands of year, make and model combinations covering the most popular vehicles of the past 30 years, plus additional coverage of specialty models.

ChiltonLibrary:



NAVIGATING
CHILTONLIBRARY
LIVE DEMO



PARTNERSHIPS
&
PROGRAMMING



- EXTRA! EXTRA!
- COMMUNITY PROGRAMMING PLANS
 - CHILTONLIBRARY GLOVEBOX HANDOUTS
 - ACTIVITIES & MORE!



ChiltonLibrary

THE WORLD AT YOUR FINGERTIPS



NAVIGATING
CHILTONLIBRARY
LIVE DEMO



ChiltonLibrary

START YOUR ENGINES...

CHILTONLIBRARY *Gowlyd*

Vehicle SearchVIN DecoderVideo LibraryASE Test Prep QuizzesAsk an Expert

FIND YOUR VEHICLE

Year

Select Year

Make

Select Make

Model

Select Model

Recent Vehicles

Reset

Select

Get the detailed information you need to tackle vehicle maintenance and repairs.

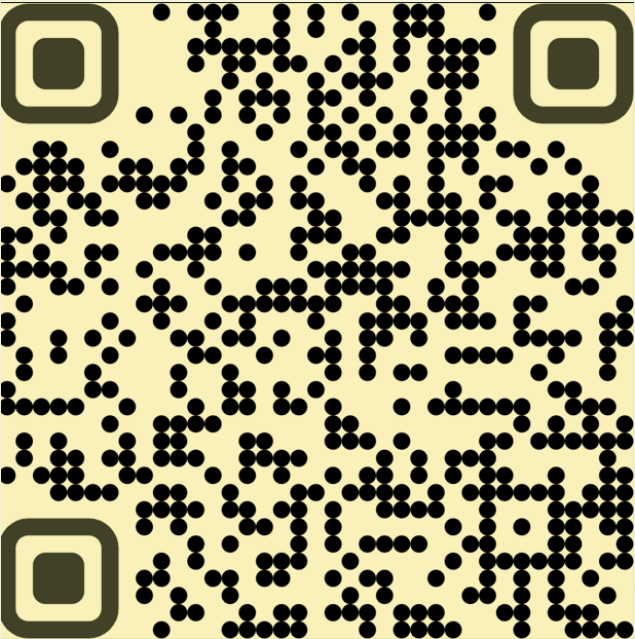
Some of ChiltonLibrary's more popular features include:

- Maintenance and specification tables that provide the unique data you need for each specific vehicle.
- Step-by-step service and repair procedures, and labor estimating tool to help you confidently determine your next move.
- Vacuum diagrams to simplify troubleshooting.
- Labor Estimating Tool.

- Wiring diagrams to help explain system operation.
- Close-up photographs and illustrations for visual support.
- ASE test prep quizzes for the most popular certification exams.
- A print button which allows you to easily print out what is needed.



CHILTONLIBRARY



LIBGUIDES -ELEARNING



ChiltonLibrary & You!



PARTNERSHIPS

&

PROGRAMMING



Partnerships

WHO WHAT WHERE

- Local Car Clubs
- Local Mechanics & Technicians
- Shop Teachers at the high school, community college, technical school, university
- Drivers' Ed teachers, programs
- Local Department of Environmental Quality office
- Department of Transportation
- Drivers' License Office
- Car dealerships (maybe they can provide fun swag)



Programming

REV UP YOUR KNOWLEDGE. SHOW OFF YOUR RIDE!

- Connect with a local car club and offer to host their next car meetup in your library parking lot!
- This is an all-ages event:
 - Multigen - Car show
 - Teens - Car care 101 & Fix it with Chilton
 - Children - Pit Stop Stations



Programming

REV UP AT YOUR LIBRARY

YOU ARE
HERE

1

'UNDER THE HOOD'
WITH
CHILTONLIBRARY



2

KIDS' PIT STOP
STATIONS
1-8

Introductions

- Live demo of ChiltonLibrary (login, search, site navigation)
- Explain 'Authentication Login Process'

ChiltonLibrary

START YOUR ENGINES...





CHILTONLIBRARY



[LIBGUIDES -ELEARNING](#)





1

Car Care 101

FIX IT WITH CHILTON!

CAR CARE 101

- Under the hood tour with Chilton
 - Live demo of ChiltonLibrary's features – including vehicle selection, repair procedures, and diagnostics.
 - **Mock Maintenance Challenge**
 - 4 Teen+ Activity stations
 - **Ask-a-Mechanic Q&A**
 - Invite a local auto expert to answer questions or share beginner-friendly tips.

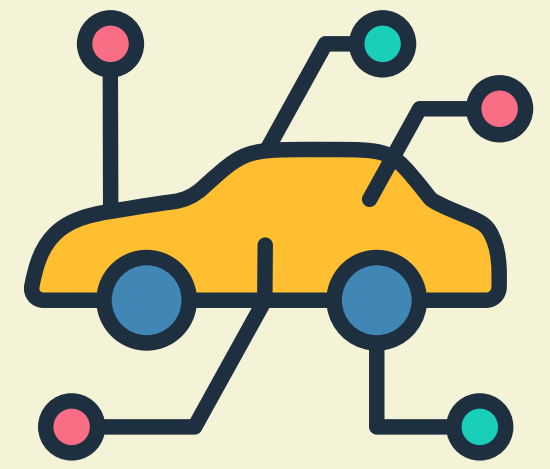


Glovebox Guides #1-3



Car Care 101

CAR PART MATCH-UP



#1 Car Part Match-Up

Materials

- Print diagrams of car systems (brakes, engine, tires) from ChiltonLibrary.
- Print out tool images
- Print repair steps on cards

Instructions

Match the part to the correct tool and correct repair step. Hide answers in envelopes labeled “Garage Bay 1,2,3” for a scavenger hunt vibe.

TEENS ADULTS MULTIGEN
CHILTONLIBRARY
Car Part Match-Up Cards
Station 1

#1 Instructions: Match the part → correct tool → correct repair step.

PART 	Print and cut out on dotted lines. Mix up and separate into specific piles: • Parts • Tools • Repair Steps
TOOL 	REPAIR STEP Loosen the lug nuts before lifting the car.

TEENS ADULTS MULTIGEN
CHILTONLIBRARY
Car Part Match-Up Cards
Station 1

#1 Instructions: Match the part → correct tool → correct repair step.

PART 	Print and cut out on dotted lines. Mix up and separate into specific piles: • Parts • Tools • Repair Steps
TOOL 	REPAIR STEP Disconnect the negative cable before removing the battery.

TEENS ADULTS MULTIGEN
CHILTONLIBRARY
Car Part Match-Up Cards
Station 1

#1 Instructions: Match the part → correct tool → correct repair step.

PART 	Print and cut out on dotted lines. Mix up and separate into specific piles: • Parts • Tools • Repair Steps
TOOL 	REPAIR STEP Remove old spark plug and check the gap on the new one.

TEENS ADULTS MULTIGEN
CHILTONLIBRARY
Car Part Match-Up Cards
Station 1

#1 Instructions: Match the part → correct tool → correct repair step.

PART 	Print and cut out on dotted lines. Mix up and separate into specific piles: • Parts • Tools • Repair Steps
TOOL 	REPAIR STEP Unscrew the old filter and install a new one with fresh oil.

TEENS ADULTS MULTIGEN
CHILTONLIBRARY
Car Part Match-Up Cards
Station 1

#1 Instructions: Match the part → correct tool → correct repair step.

PART 	Print and cut out on dotted lines. Mix up and separate into specific piles: • Parts • Tools • Repair Steps
TOOL 	REPAIR STEP Remove the air filter housing clips and replace the filter.

TEENS ADULTS MULTIGEN
CHILTONLIBRARY
Car Part Match-Up Cards
Station 1

#1 Instructions: Match the part → correct tool → correct repair step.

PART 	Print and cut out on dotted lines. Mix up and separate into specific piles: • Parts • Tools • Repair Steps
TOOL 	REPAIR STEP Lift the car to remove and swap front and rear tires.

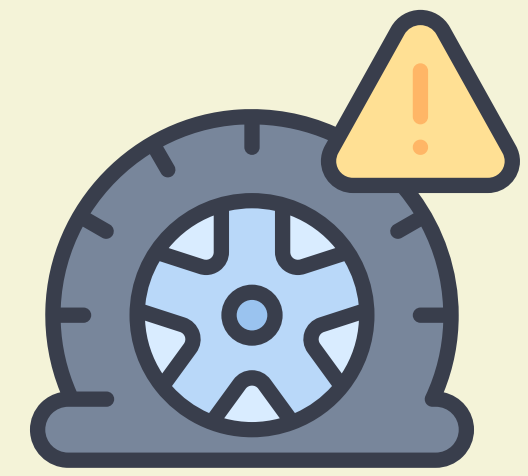
TEENS ADULTS MULTIGEN
CHILTONLIBRARY
Car Part Match-Up Cards
Station 1

#1 Instructions: Match the part → correct tool → correct repair step.

PART 	Print and cut out on dotted lines. Mix up and separate into specific piles: • Parts • Tools • Repair Steps
TOOL 	REPAIR STEP Press the release tab and slide the wiper blade off the arm.

Car Care 101

FLAT TIRE FIX



#2 Flat Tire Fix

Materials

- Print out Chilton's step-by-step for changing a tire.
- Cut into strips.



Instructions

Teams must put the steps in correct order before the clock runs out. Add in one or two silly 'wrong' steps (sing to your tire) to make it fun.

TEENS ADULTS MULTIGEN

CHILTONLIBRARY

Flat Tire Fix Challenge Station 2



#2 Instructions: Put the repair steps in the correct order!

SAFELY PARK AND ENGAGE THE PARKING BRAKE.

PLACE JACK UNDER THE CAR'S FRAME NEAR THE TIRE.

LOOSEN LUG NUTS WITH A WRENCH.

RAISE THE CAR WITH THE JACK.

REMOVE THE FLAT TIRE.

MOUNT THE SPARE TIRE.

TIGHTEN LUG NUTS SECURELY.

TAKE A SELFIE WITH THE CAR.

PAT THE CAR FOR GOOD LUCK.

#1

#2

#3

#4

#5

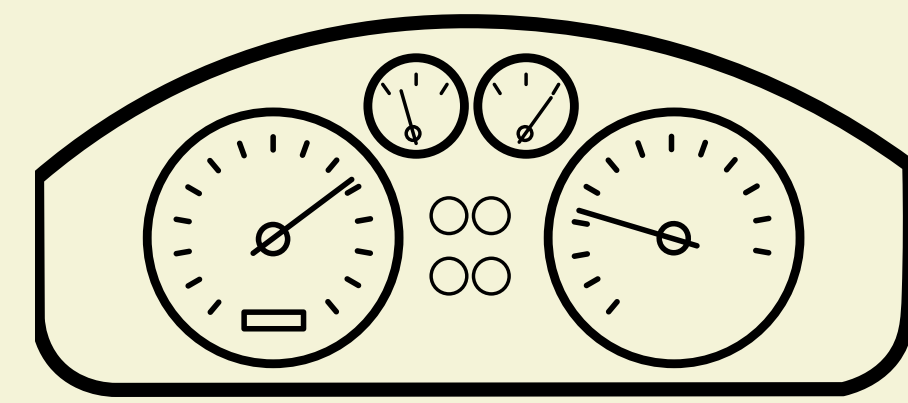
#6

#7

CUT ON THE DOTTED LINES, MIX UP, AND HAVE PATRONS TO PUT STEPS IN ORDER.

Car Care 101

DASHBOARD DECODER



#3 Dashboard Decoder

Materials

- Chilton printouts of dashboard warning lights.


Instructions

Match the symbol with its meaning and recommended action from Chilton.

Each correct match reveals a letter / number clue leading to the final 'code' like unlocking a prize box.


TEENS ADULTS MULTIGEN
CHILTONLIBRARY
Dashboard Light Decoder
Station 3

#3 Instructions: Match the dashboard symbol with its meaning and action.

SYMBOL	
	Print and cut out on dotted lines. Mix up and separate into specific piles: <ul style="list-style-type: none">SymbolMeaningAction
	MEANING Low Oil Pressure
	ACTION Check engine oil level and add oil immediately.


TEENS ADULTS MULTIGEN
CHILTONLIBRARY
Dashboard Light Decoder
Station 3

#3 Instructions: Match the dashboard symbol with its meaning and action.

SYMBOL	
	Print and cut out on dotted lines. Mix up and separate into specific piles: <ul style="list-style-type: none">SymbolMeaningAction
	MEANING Anti-lock braking system issue.
	ACTION Have brakes inspected--normal braking may still work, but ABS is disabled.


TEENS ADULTS MULTIGEN
CHILTONLIBRARY
Dashboard Light Decoder
Station 3

#3 Instructions: Match the dashboard symbol with its meaning and action.

SYMBOL	
	Print and cut out on dotted lines. Mix up and separate into specific piles: <ul style="list-style-type: none">SymbolMeaningAction
	MEANING Airbag system malfunction.
	ACTION Have vehicle serviced - airbags may not deploy in a crash.


TEENS ADULTS MULTIGEN
CHILTONLIBRARY
Dashboard Light Decoder
Station 3

#3 Instructions: Match the dashboard symbol with its meaning and action.

SYMBOL	
	Print and cut out on dotted lines. Mix up and separate into specific piles: <ul style="list-style-type: none">SymbolMeaningAction
	MEANING Engine or emissions issue.
	ACTION Use ChiltonLibrary to run diagnostics and troubleshoot.


TEENS ADULTS MULTIGEN
CHILTONLIBRARY
Dashboard Light Decoder
Station 3

#3 Instructions: Match the dashboard symbol with its meaning and action.

SYMBOL	
	Print and cut out on dotted lines. Mix up and separate into specific piles: <ul style="list-style-type: none">SymbolMeaningAction
	MEANING Charging System Problem.
	ACTION Check alternator and battery connections.


TEENS ADULTS MULTIGEN
CHILTONLIBRARY
Dashboard Light Decoder
Station 3

#3 Instructions: Match the dashboard symbol with its meaning and action.

SYMBOL	
	Print and cut out on dotted lines. Mix up and separate into specific piles: <ul style="list-style-type: none">SymbolMeaningAction
	MEANING Engine overheating.
	ACTION Stop driving, let the engine cool, and check coolant.

TEENS ADULTS MULTIGEN
CHILTONLIBRARY
Dashboard Light Decoder
Station 3

#3 Instructions: Match the dashboard symbol with its meaning and action.

SYMBOL	
	Print and cut out on dotted lines. Mix up and separate into specific piles: <ul style="list-style-type: none">SymbolMeaningAction
	MEANING Brake system alert.
	ACTION Check brake fluid level or disengage parking brake.



Car Care 101

MYSTERY REPAIR



#4 Mystery Repair

Materials

- Create a fake 'repair ticket' Use Chilton troubleshooting printouts with possible causes.

Instructions

Identify the most likely repair by cross-referencing symptoms with Chilton.
Solving unlocks the next case file.

TEENS ADULTS MULTIGEN
CHILTONLIBRARY
Mystery Repair Case File
Station 4

#4 Case #1: _____

“
CAR WON'T START. WHEN I TURN THE KEY,
IT JUST MAKES A RAPID CLICKING NOISE.
”

Possible causes:

1. Dead Battery.
2. Alternator Failure.
3. Low Tire Pressure.

✂

Likely Repair:
Replace or recharge battery.

TEENS ADULTS MULTIGEN
CHILTONLIBRARY
Mystery Repair Case File
Station 4

#4 Case #2: _____

“
WHITE SMOKE IS COMING FROM THE
TAILPIPE AFTER I START THE CAR.
”

Possible causes:

1. Coolant leaking into the engine.
2. Worn-out brake pads.
3. Cracked Head gasket.

✂

Likely Repair:
Diagnose coolant leak,
head gasket issue.

TEENS ADULTS MULTIGEN
CHILTONLIBRARY
Mystery Repair Case File
Station 4

#4 Case #3: _____

“
STEERING WHEEL SHAKES WHENEVER
I BRAKE AT HIGH SPEED.
”

Possible causes:

1. Warped brake rotors.
2. Low windshield washer fluid.
3. Loose wheel lug nuts.

✂

Likely Repair:
Replace brake rotors.

TEENS ADULTS MULTIGEN
CHILTONLIBRARY
Mystery Repair Case File
Station 4

#4 Case #4: _____

“
TEMPERATURE GAUGE GOES INTO
THE RED AFTER 15 MINS OF DRIVING
”

Possible causes:

1. Broken radiator fan.
2. Low coolant levels.
3. Faulty thermostat.

✂

Likely Repair:
Check coolant and
replace thermostat or fan.

TEENS ADULTS MULTIGEN
CHILTONLIBRARY
Mystery Repair Case File
Station 4

#4 Case #5: _____

“
CAR SHAKES WHEN IDLING AT
STOPLIGHTS, ENGINE FEELS JUMPY
”

Possible causes:

1. Dirty air filter.
2. Worn spark plugs.
3. Flat spare tire.

✂

Likely Repair:
Replace spark plugs
or clean air filter.

Programming

REV UP AT YOUR LIBRARY

1

**'UNDER THE HOOD'
WITH
CHILTONLIBRARY**



2

**KIDS' PIT STOP
STATIONS
1-8**





KID STATIONS

Kid Pit Stop Stations

TO KEEP THEM OCCUPIED WHILE OTHERS
TALK 'SHOP'

- Design your Dream Car
- Matchbox Car Wash
- Parts Match-Up
- Tire Toss Challenge
- Mini Mechanic Photo Booth
- Rev your Brain Trivia Wheel
- Build-a-car STEM Table
- License Station

CHILDREN
CHILTONLIBRARY

Kids' Pit Stop Stations Stations 1-4

#1 Design your Dream Car

Materials

- Car Outline Printouts
- Crayons, markers, colored pencils
- Stickers
- Glue sticks

Instructions

Kids get a blank car template to color and customize. Hang completed cars on a 'Kid Garage Wall of Fame' bulletin board.

#2 Matchbox Car Wash

Materials

- Plastic bins with water + bubbles
- Old toothbrushes or sponges
- Towels to dry cars
- Matchbox cars

Instructions

A sensory play station with soapy water and toy cars.

#3 Parts Match-Up

Materials

- Laminated diagram of a car
- Velcro-backed car parts (printouts or small toys)
- Flashcards with the part name and a fun fact

Instructions

Match real or illustrated car parts to where they belong on a labeled poster. Include age-friendly definitions, ex. 'Engine = the heart of a car'!

#4 Tire Toss Challenge

Materials

- Hula hoops or DIY cardboard 'tires'
- Beanbags of small plus 'tools'
- Scorecard or stopwatch if you want to race.

Instructions

Toss beanbags into a cardboard tires or hula hoops.

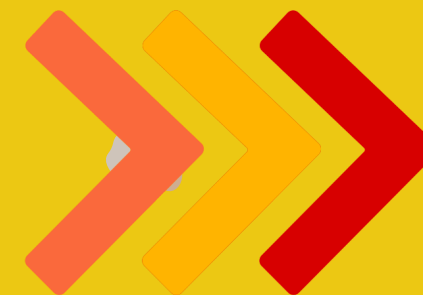
CHILDREN
CHILTONLIBRARY

Kids' Pit Stop Stations Design your Dream Car

Glue-lee printable
Cars

<https://acrobat.adobe.com/id/urn-aaid:sc:VA6C2-1ach0113-fd34-4236-a692-84eeaacf651c>

• Crafts, Games, Cars!



2 Kids' Pit Stop Stations

STATION #1

CHILDREN

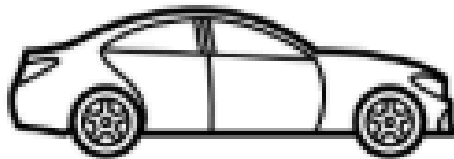
CHILTONLIBRARY

Kids' Pit Stop Station Stations 1-4

#1 Design your Dream Car

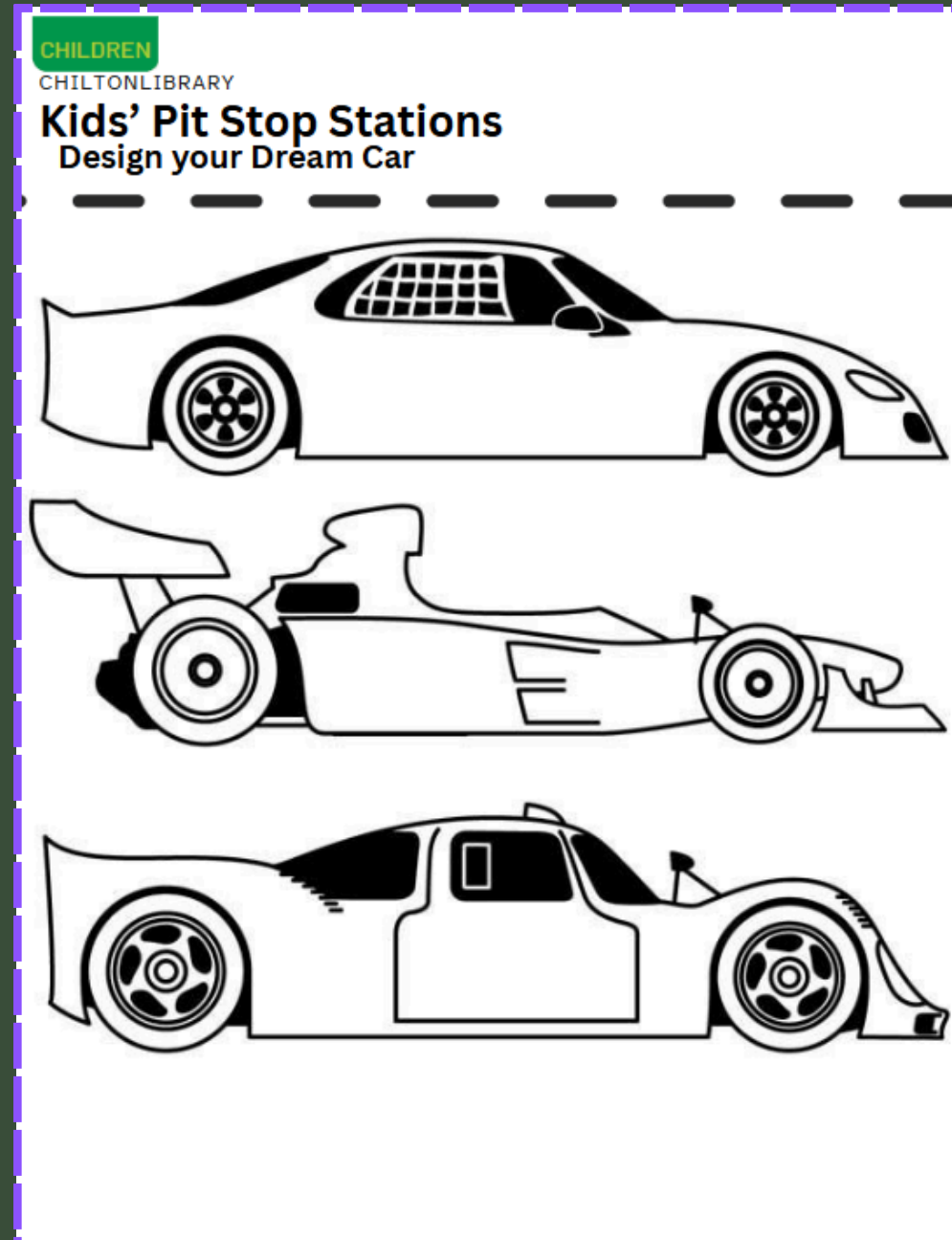
Materials

- Car Outline Printouts
- Crayons, markers, colored pencils
- Stickers
- Glue sticks



Instructions

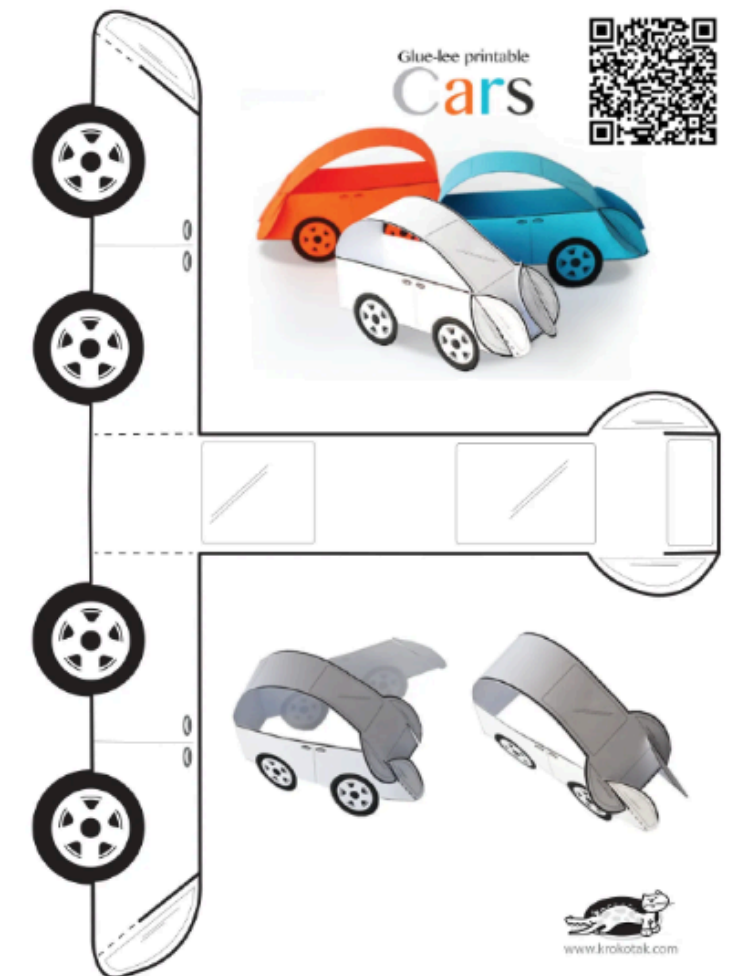
Kids get a blank car template to color and customize. Hang completed cars on a 'Kid Garage Wall of Fame' bulletin board.



CHILDREN

CHILTONLIBRARY

Kids' Pit Stop Stations Design your Dream Car



<https://acrobat.adobe.com/id/urn:aaid:sc:VA6C2:1acb0113-fd34-4236-a692-84eeac6551c>

2 Kids' Pit Stop Stations

STATIONS #2-4



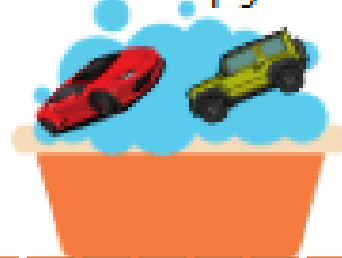
#2 Matchbox Car Wash

Materials

- Plastic bins with water + bubbles
- Old toothbrushes or sponges
- Towels to dry cars
- Matchbox cars

Instructions

A sensory play station with soapy water and toy cars.



#3 Parts Match-Up



Materials

- Laminated diagram of a car
- Velcro-backed car parts (printouts or small toys)
- Flashcards with the part name and a fun fact

Instructions

Match real or illustrated car parts to where they belong on a labeled poster. Include age-friendly definitions, ex. 'Engine = the heart of a car'!

#4 Tire Toss Challenge

Materials

- Hula hoops or DIY cardboard 'tires'
- Beanbags of small plus 'tools'
- Scorecard or stopwatch if you want to race.

Instructions

Toss beanbags into a cardboard tires or hula hoops.



2 Kids' Pit Stop Stations

STATIONS #5-8

CHILDREN

CHILTONLIBRARY

Kids' Pit Stop Stations Stations 5-8

#5 Mini Mechanic Photo Booth

Materials

- Toy tools, goggles, bandanas, mechanic jumpsuit, race driver jumpsuit, hats, helmets.
- Cardboard cutout car or backdrop.
- Photo stand or instant photo printer.

Instructions

Dress up like a mechanic or race car driver and take fun photos.

#7 Build-a-Car STEM Table

Materials

- LEGO, DUPLOs, building kits
- Cardboard recyclables to transform into transportation (egg cartons, milk jugs, tp rolls, etc).

Instructions

Use LEGO, magnetic tiles, or cardboard to build your own vehicle.

#6 'Rev up Your Brain' Trivia Wheel

Materials

- Spinner or wheel
- Easy questions (e.g. 'what color means go?')
- Prizes: toy cars, stickers, etc.

Instructions

Spin a wheel and answer a fun transportation-related trivia question.

#8 License Station

Materials

- Mini ID card template
- Markers, camera, laminator, or sleeves.

Instructions

Let each child create their own 'Driver's license' with their name, age, photo, and favorite color car.

CHILDREN

CHILTONLIBRARY

Kids' Pit Stop Stations License Station Template

DRIVERS LICENSE

.....
Name

.....
Age

.....
Favorite Car

SAFETY FIRST

WYOMING

307

DRIVERS LICENSE

.....
Name

.....
Age

.....
Favorite Car

SAFETY FIRST

WYOMING

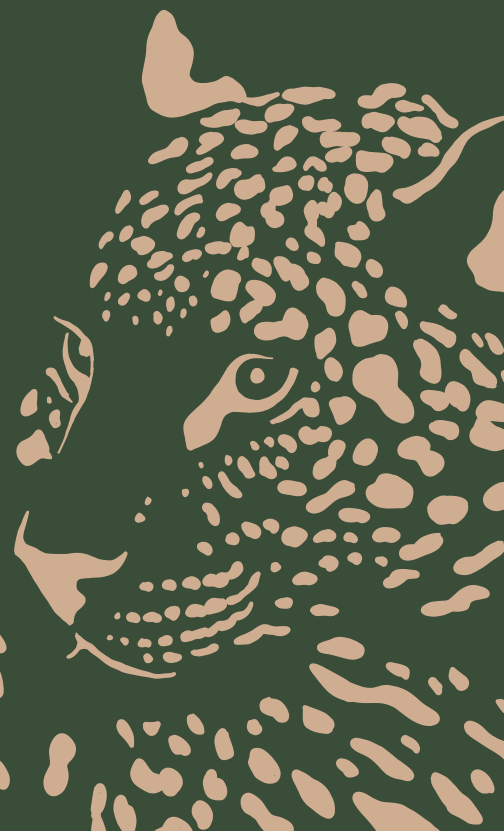
307

CultureGrams



EXTRA! EXTRA!

- PROGRAMMING PLANS
- QR CODES TO RESOURCES & PRINTOUTS!



Resources

PB&J Webinar Series: CultureGrams Presentation
© 2025 by Joanne Pruitt is licensed under Creative
Commons Attribution-ShareAlike 4.0 International.
To view a copy of this license, visit
<https://creativecommons.org/licenses/by-sa/4.0/>



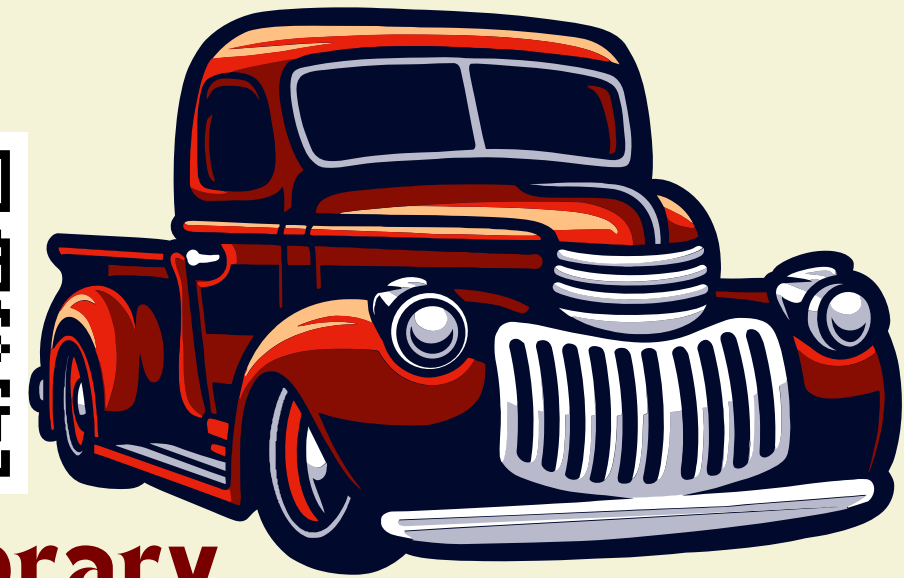
ChiltonLibrary



**ChiltonLibrary
Teen Stations**



**ChiltonLibrary
Glovebox Guides**



**ChiltonLibrary
Kids' Pit Stop
Stations**



**This
Presentation**

